

# Two Piece Mountings

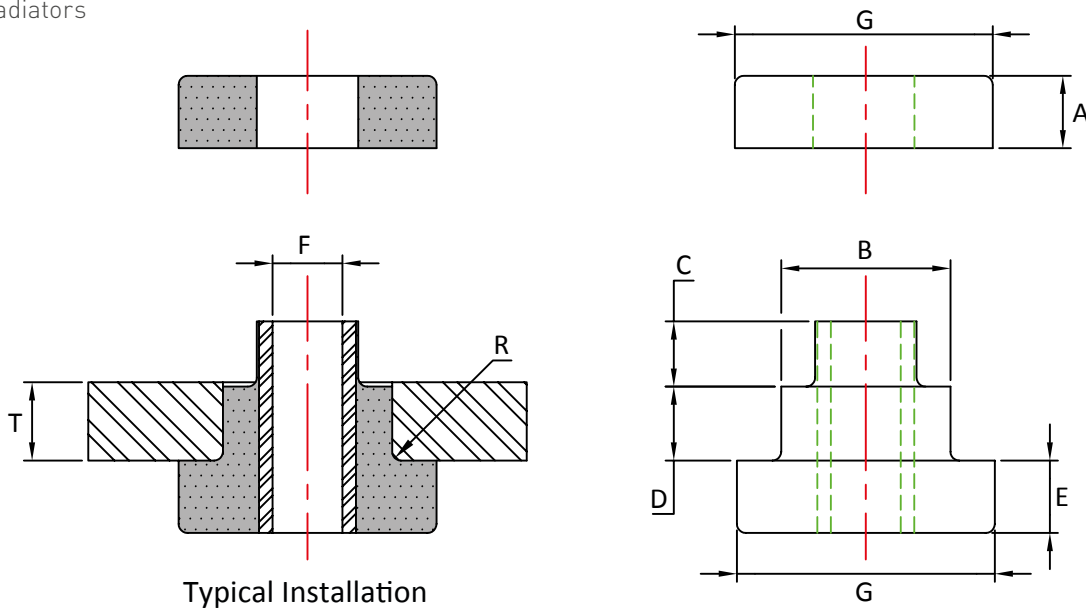


Two Piece mountings are an ideal product for reducing vibration and accommodating high shock forces. They are also used to allow flexibility within an installation to reduce stress on brackets and fabrications.

Two Piece mountings are suitable for both Static and Mobile applications, and should be installed with top and bottom washers to provide a failsafe installation.

## Applications:

- Construction Equipment
- Power Generation
- Military Vehicles
- Off-Road Vehicles
- Agricultural Equipment
- Radiators



Part No	A	B	C	D	E	F	G	R	Tmax	Tmin	Max Load (at Tmax)	
											45° Shore A	60° Shore A
TP3035	12.3	20.1	10.3	9.3	12.3	10.3	33	1	9.5	9.5	40	110
TP4850	20	31	19	10	20	13.5	47.5	1.5	14	12.5	80	130
TP2203	22.5	39.5	24	15	23	16.5	64	2.5	22	19	120	260
TP9075	25	58.4	26.5	22	25	24.1	89	3	28.6	25.4	260	450
TP3520	7.5	22.6	5	4.9	7.5	10.35	35	1	6	6	42	84
TP3520W10*	9	22.6	6.5	3.5	9	10.2	35	2	4	4	42	84
TP3025	12.3	20.1	10.3	2.5	12.3	10.3	33	1	5	5	35	75

\*with intergrated bonded washers

Max Load should be derated by 25% for off highway and high dynamic applications

Max compression load in Kg deflection in mm.

This information is for guidance only. Customers are recommended to contact us for further technical information on products and applications. We reserve the right to alter specifications or withdraw products without notice.