

Interleaf Mountings

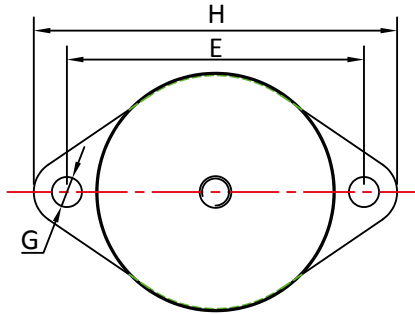
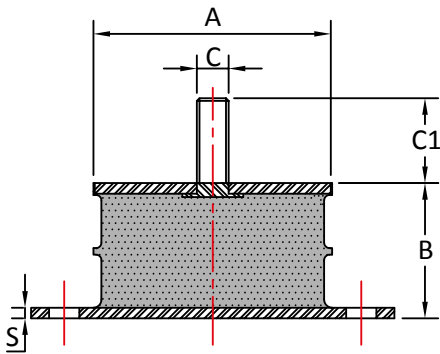
Interleaf Mountings are produced with an integrally bonded interleaf metal to increase the compression load capacity of the mounting, and are ideal where large compressive forces need to be accommodated whilst giving relatively small amounts of deflection on the product and also retaining their low stiffness in the shear direction. The mountings are also available without interleaf metals.

Advantages:

- Accommodate High Compression Forces
- High Quality Rubber Formulation – Extended Life
- Easy to Install

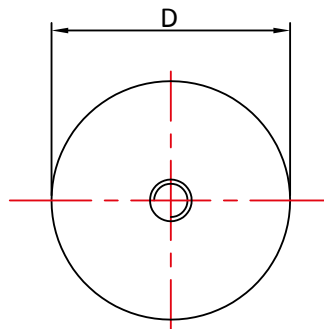
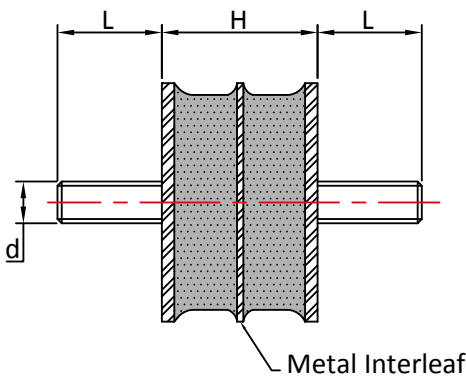
Applications:

- Vibratory Rollers
- Sieves & Grading Equipment
- Construction Equipment
- Industrial Machinery



Part No	A	B	C	C1	E	G	H	S	45° Shore		60° Shore	
									Load (Kg)	Def. (mm)	Load (Kg)	Def. (mm)
FCM1536*	89	50.8	M12	32.5	112	11	137	4	250	5	500	5

*Without Metal Interleaf



Part No	D	H	L	d	Max Load (kg)			Deflection mm
					45° Shore A	60° Shore A	70° Shore A	
IB1392	57	37	25	M10	120	250	330	2.6
NIB1388*	57	37	25	M10	70	140	198	3.0
IB1393	76.2	36.6	25	M10	230	580	810	3.0
NIB1389*	76.2	36.6	25	M10	150	300	420	2.9

*Without Metal Interleaf

Max compression load in Kg deflection in mm.

This information is for guidance only. Customers are recommended to contact us for further technical information on products and applications. We reserve the right to alter specifications or withdraw products without notice.